

RC-210 Version 3.0 Board CW Level Modification

Purpose

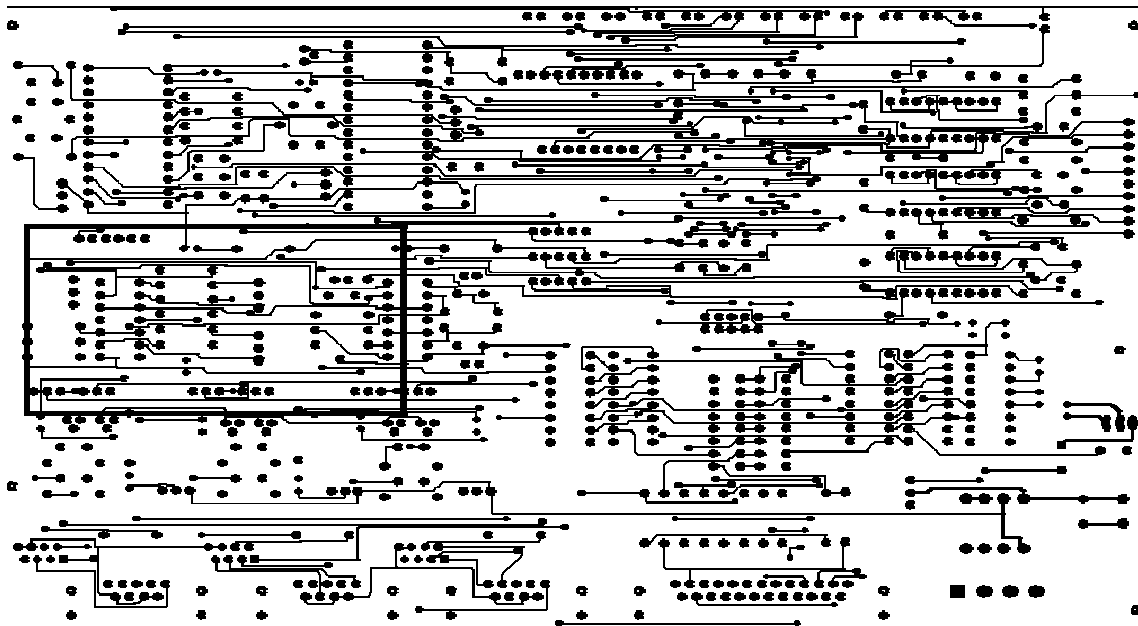
This modification will correct the receive audio level change that occurs whenever a CW ID is sent. This modification is only needed if you have a version 3.0 pc board.

Overview

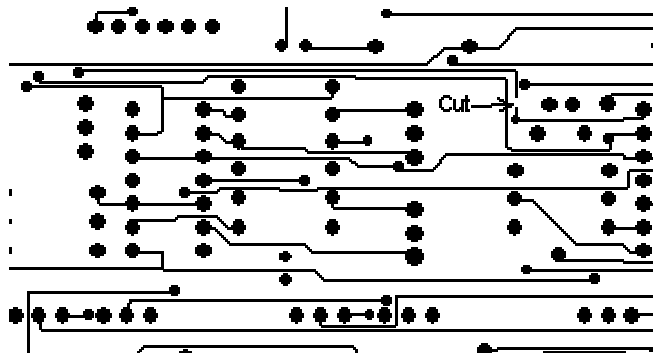
The modification requires the cutting of a single trace on the bottom of the board and soldering a 470 ohm resistor to complete the path that trace used to complete.

Instructions

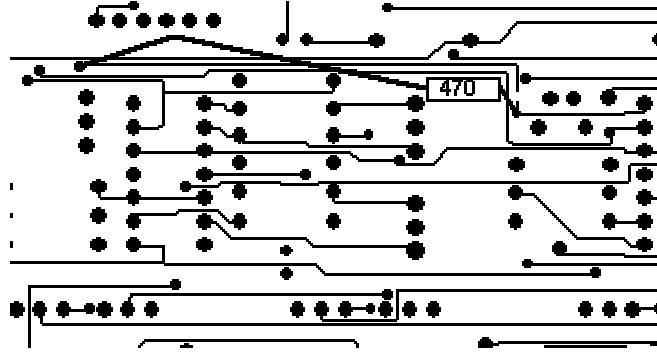
If the RC210 is installed in the rack mount, remove the board. Turn the board over. The area where the modification will be performed is shown in the rectangular are, as shown in the diagram below



Cut the trace shown, taking care not to cut adjacent traces



Install a 470 ohm resistor (not supplied) as shown. Bend the end of each lead and insert into the pc board 'via' where shown. Note that the leads should be insulated to prevent contact with other solder pads and do not necessarily have to be routed as shown.



Reinstall the board in the rack mount (if applicable). Now, when someone keys while CW is being sent, the receive (repeat) level will remain constant but the CW will be muted (it will still be audible however, so as to remain legal).